



# SANCTUARY

WENTWORTH POINT

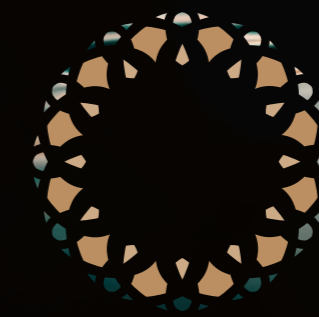


SEKISUI HOUSE

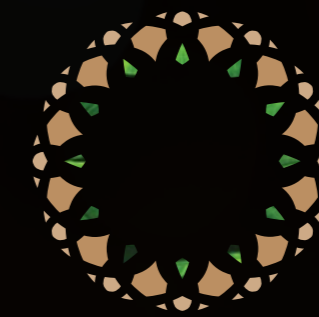


Sanctuary offers an ever-changing life  
experience through people, culture and  
the environments within.

THE NEXT STAGE



LAGUNA



GLADE

AT SANCTUARY





## Experience serene parkside living in the heart of Sanctuary.

Overlooking the Parramatta River and bordering the neighbourhood green, the Laguna and Glade residences and Revive Health Club lie at the centre of Sanctuary's vibrant community estate.

With 171 premium apartments designed for owner occupiers, the living experience at Laguna and Glade is unparalleled. Enjoy the benefits of exclusivity and tranquility whilst having the ease

of connection to Wentworth Point and Sydney's key city destinations, such as Barangaroo and Circular Quay, a simple ferry ride away.

Embracing the calm, yet creative flow of the river and the best of international living standards, these developments have been designed to allow seamless communication between the natural landscape and modern architecture.





L A G U N A

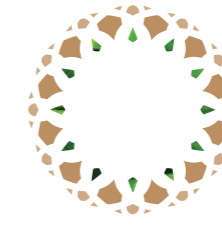
### Boutique living on the water's edge.

Laguna is immersed with and inspired by nature; the residential building and the surrounding landscape seamlessly weaves the built form with the natural environment, resulting in vibrant and harmonious living.

Laguna sets a new benchmark for residential living. The jewel of the Sanctuary masterplan, this site thrives on connectedness to local amenities,

the neighbourhood green, the expansive and luscious foreshore park as well as the Revive Health Club.

Nestled on the water's edge of Wentworth Point, Laguna offers exclusive boutique living designed to create enriching interactions between people and place.



G L A D E

### A serene parkside living experience.

Surrounded by nature and connected to the neighbourhood green by its terraces, Glade is positioned in the centre hub of Sanctuary. With nature acting as a bridge between the apartments and the wider landscape, Glade offers an unrivalled living experience where nature and urban living seamlessly integrate for the ultimate balanced lifestyle.

The connection with nature that life at Glade offers creates a beautiful sense of home. Overlooking the river, the apartments at Glade are complete with exquisite finishes and generous, well-planned interiors exuding a unique and tranquil charm.



Artist's impression only

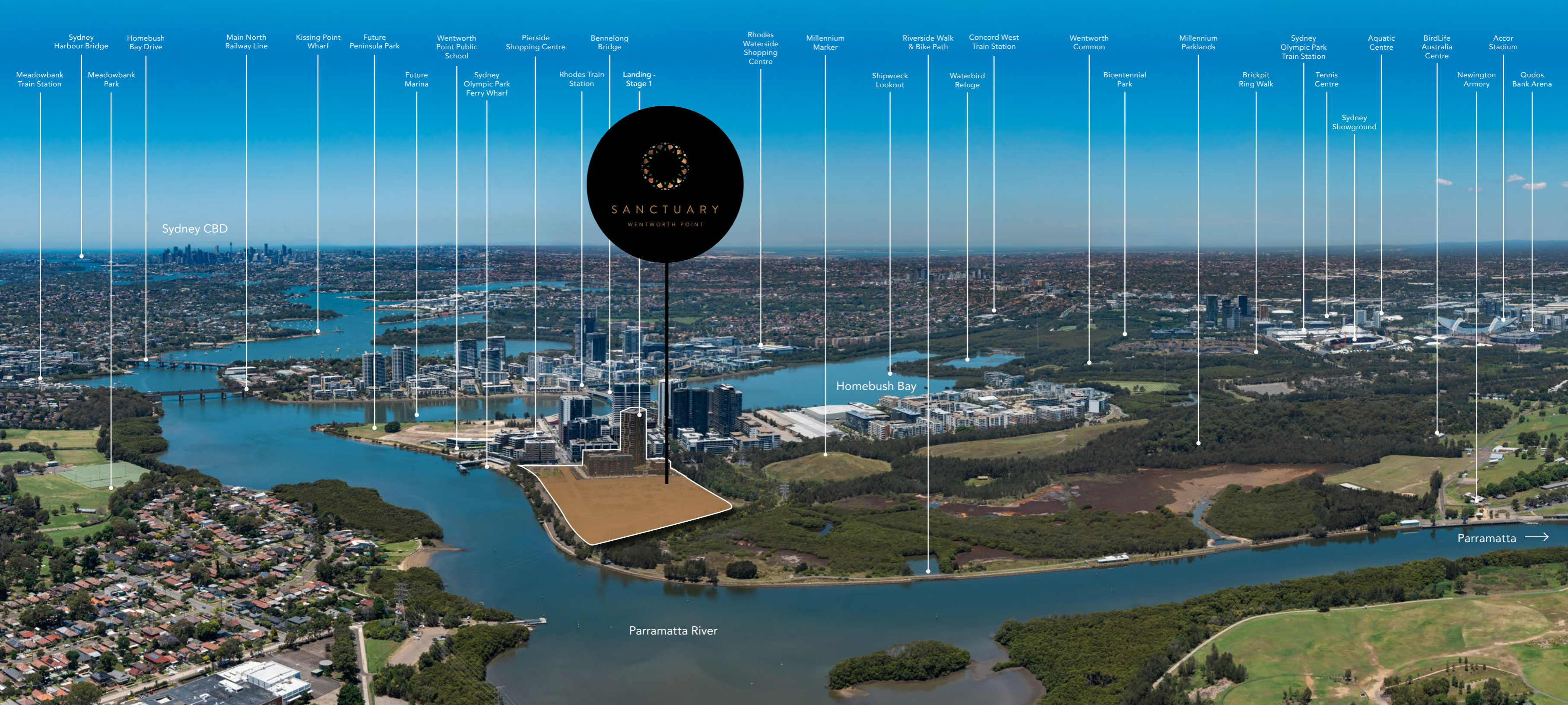


Artist's impression only









## A sophisticated and uniquely positioned masterplanned community that celebrates luxury living and community connections.

Drawing inspiration from Wentworth Point's natural environment, surrounding woodlands and the gentle curves of the river, residents at Laguna and Glade will experience a vibrant, energetic and diverse lifestyle. The buildings have been designed to truly embrace the moving, growing and ever-adapting environment that defines Wentworth Point.

Set on the banks of the Parramatta River and bounded by Newington's nature reserve, Laguna and Glade are uniquely placed to offer some of the best urban living choices that Sydney has to offer. With easy connections to surrounding parks, community facilities and shared areas, a healthy lifestyle and a unique community feel is a hallmark of Sanctuary.

### Parks & Recreation

- Shipwreck Lookout - 3 min drive
- Wentworth Common - 4 min drive
- Riverside Walk & Path - 15 min river walk
- Millennium Parklands - 15 min walk
- Bicentennial Park - 6 min drive
- Meadowbank Park - 16 min drive

### Amenities

- Qudos Bank Arena - 4 min drive
- Olympic Park Tennis Centre - 6 min drive
- Olympic Park Aquatic Centre - 6 min drive
- Accor Stadium - 6 min drive
- Sydney Showground - 6 min drive
- URBNSURF - 3 min drive
- Concord Golf Club - 12 min drive

### Connectivity

- Olympic Park Ferry Wharf - 2 min walk
- Bennelong Bridge - 3 min walk
- Sydney Olympic Park Station - 6 min drive
- Main North Railway - 9 min drive
- Rhodes Train Station - 10 min drive
- Meadowbank Train Station - 16 min drive
- Kissing Point Ferry Wharf - 18 min drive
- Parramatta CBD - 19 min drive
- Sydney CBD - 29 min drive

### Medical

- MyHealth Medical Centre - 2 min walk
- Newington Medical - 5 min drive
- Westmead Hospital - 20 min drive
- Westmead Children's Hospital - 20 min drive

### Shopping & Dining

- Pierside Shopping Centre - 2 min walk
- Pier Point Cafe - 2 min walk
- Coles Wentworth Point - 3 min walk
- Marina Square - 5 min walk
- Oliveto Ristorante & Bar - 8 min drive
- Armory Wharf Cafe - 22 min river walk

### Schools & Education

- Wentworth Point Public School - 2 min walk
- Rhodes Central Pre-School - 25 min walk
- University of Western Sydney - 10 min drive
- Marsden High School - 10 min drive
- Newington Public School - 12 min drive
- TAFE NSW - Meadowbank - 12 min drive
- Trinity Grammar College - 15 min drive



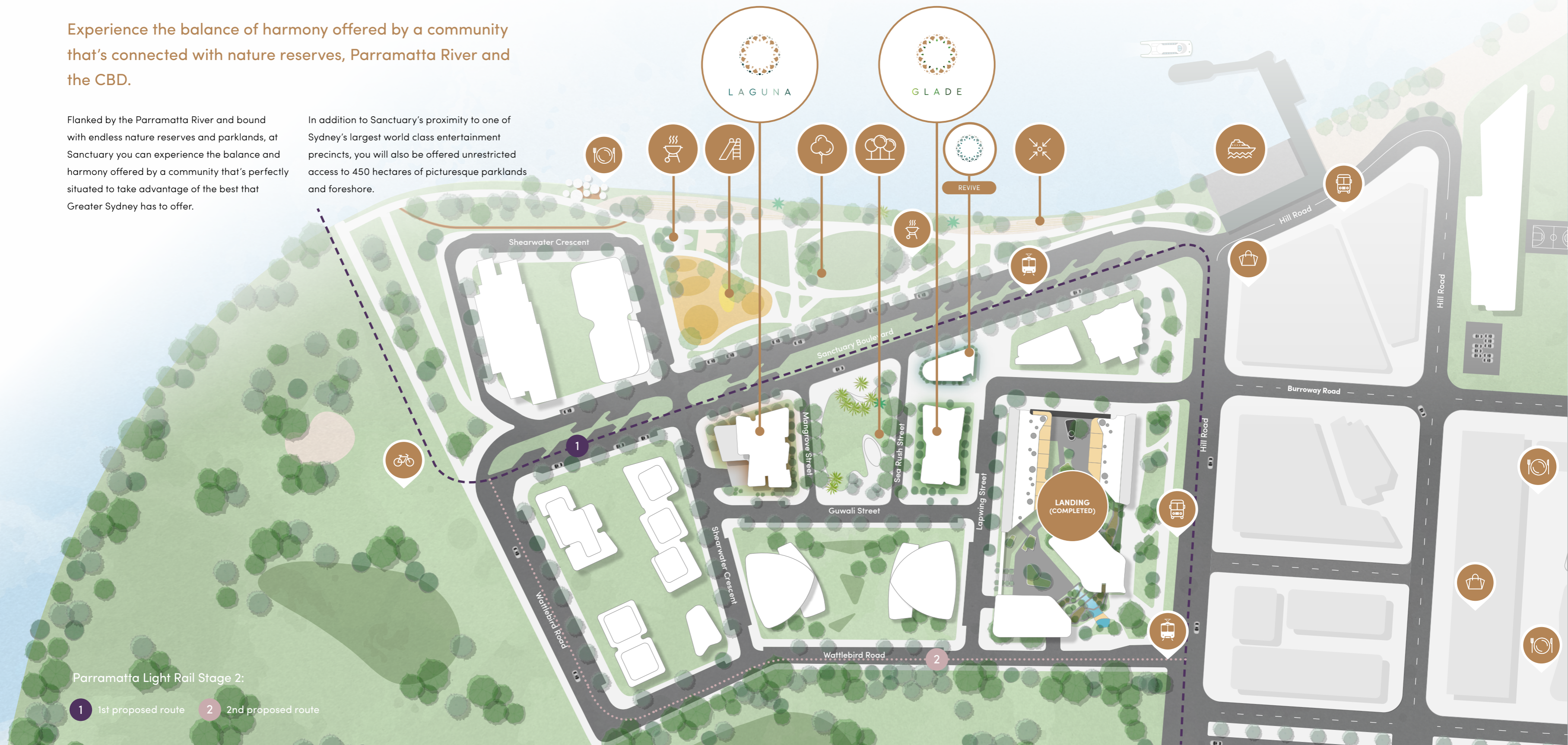




Experience the balance of harmony offered by a community that's connected with nature reserves, Parramatta River and the CBD.

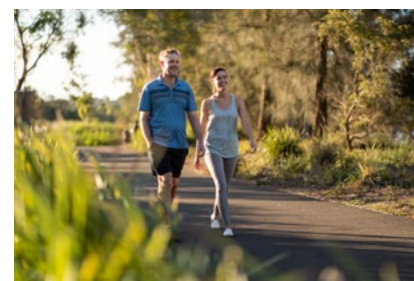
Flanked by the Parramatta River and bound with endless nature reserves and parklands, at Sanctuary you can experience the balance and harmony offered by a community that's perfectly situated to take advantage of the best that Greater Sydney has to offer.

In addition to Sanctuary's proximity to one of Sydney's largest world class entertainment precincts, you will also be offered unrestricted access to 450 hectares of picturesque parklands and foreshore.



Parramatta Light Rail Stage 2:

- 1 1st proposed route
- 2 2nd proposed route



### Neighbourhood Green & Parks

Sanctuary enjoys access to local parklands, including the expansive, lush and vibrant foreshore park and neighbourhood green.



### Revive

Revive Health Club features state-of-the-art facilities which allow residents to enjoy a healthy lifestyle that promotes balance and wellbeing.



### Connectivity

Sanctuary benefits from ferry and bus services, along with Stage 2 Parramatta Light Rail. This two-way service links Wentworth Point with Parramatta CBD, Camellia Town Centre, the Carter Street Precinct and Sydney Olympic Park.



### BBQ & Entertainment

Residents can enjoy alfresco dining, surrounded by the nature reserves of Sanctuary, with BBQ and entertainment facilities at their doorstep.



### Shopping & Dining

Pierside Shopping Centre and Marina Square, a new retail precinct, are both within close proximity, allowing for shopping, dining and browsing.



### Explore

47.77 hectares of nature reserves for you to explore connecting you to neighbouring suburbs Sydney Olympic Park and Newington.





## Experience life at Sanctuary, where wellbeing is a way of life.

Sanctuary can be enjoyed in many different ways, based on your lifestyle preferences. Wake up early and exercise in the state-of-the-art wellness centre, Revive, and make your way to work at Circular Quay via a quick, yet relaxing ferry ride. Or, choose a slower pace and wake up to a beautiful view of the river, followed by a rejuvenating swim in the 25m pool and then a

relaxing stroll along the foreshore before treating yourself to a freshly brewed coffee nearby.

Sanctuary is the perfect place to escape the hustle and bustle of the CBD. At Sanctuary you can take in the spoils of nature whilst still enjoying connectedness to the CBD and the greater Wentworth Point region.





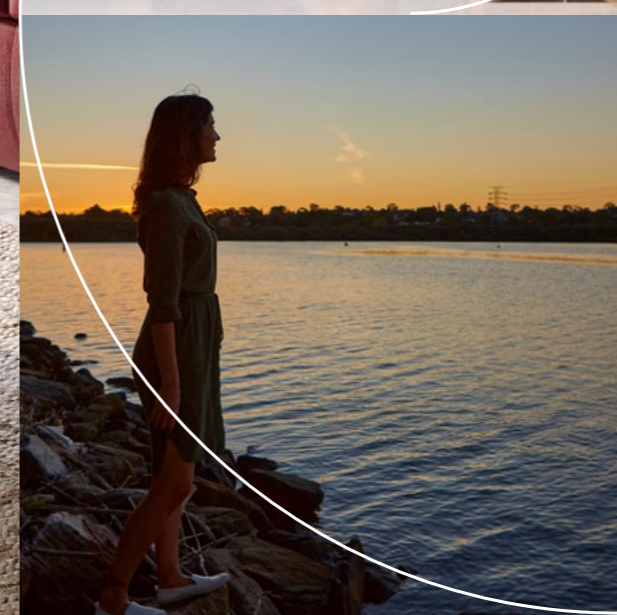
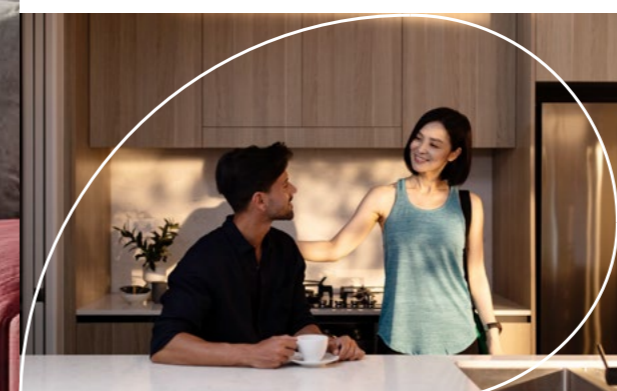
## With a design that appeals to the heart, the essence of nature flows through all facets of Laguna and Glade.

Inspired by the calm, natural curve of the river, the building's interior and exterior façade features rich & earthy / white & grey tones, and smooth matte finishes.

With water and nature driving the core essence of the development, every scheme boasts a contemporary design that is cool, clean and working towards the quest to reconcile humanity with the built form.

The apartments have been designed for ultimate liveability, with flexible and practical living spaces. The well-appointed kitchen, living and dining areas flow onto spacious balconies, allowing for a gentle airflow throughout the apartments.

There is a strong vibrancy and uniqueness that brings the building to life, helping to induce reflection, stimulation and motivation.









## Earth - Finishes Palette

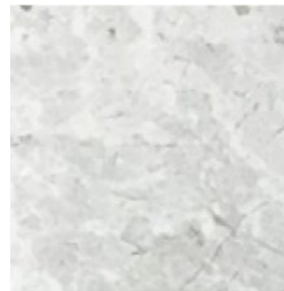
Earthy tones of brown, warm timber and tones of light grey. This scheme is rich with beauty.



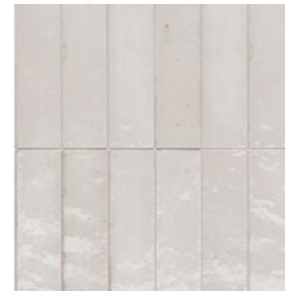
Benchtop



Bathroom Floor Tile



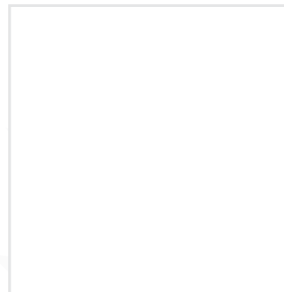
Bathroom Wall Tile



Bathroom Decorative Wall Tile



Living, Kitchen, Dining and Laundry Floor Tile



Kitchen Joinery Finish



Carpet Finish

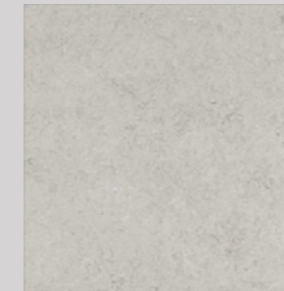


Outdoor Balcony Pavers

All specifications and features are subject to change and all the images are indicatives only.

## Water - Finishes Palette

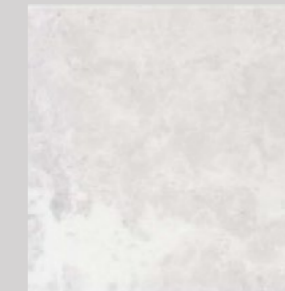
Tones of white and grey with matte finishes. This scheme is cool, clean and contemporary.



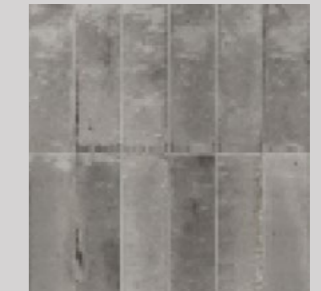
Benchtop



Bathroom Floor Tile



Bathroom Wall Tile



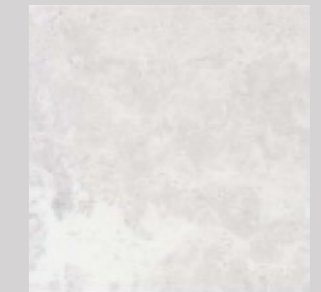
Bathroom Decorative Wall Tile



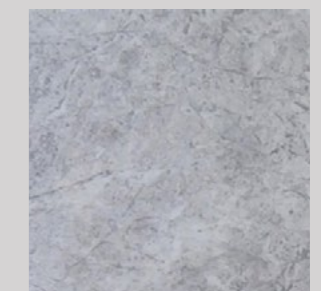
Carpet Finish



Kitchen Joinery Finish



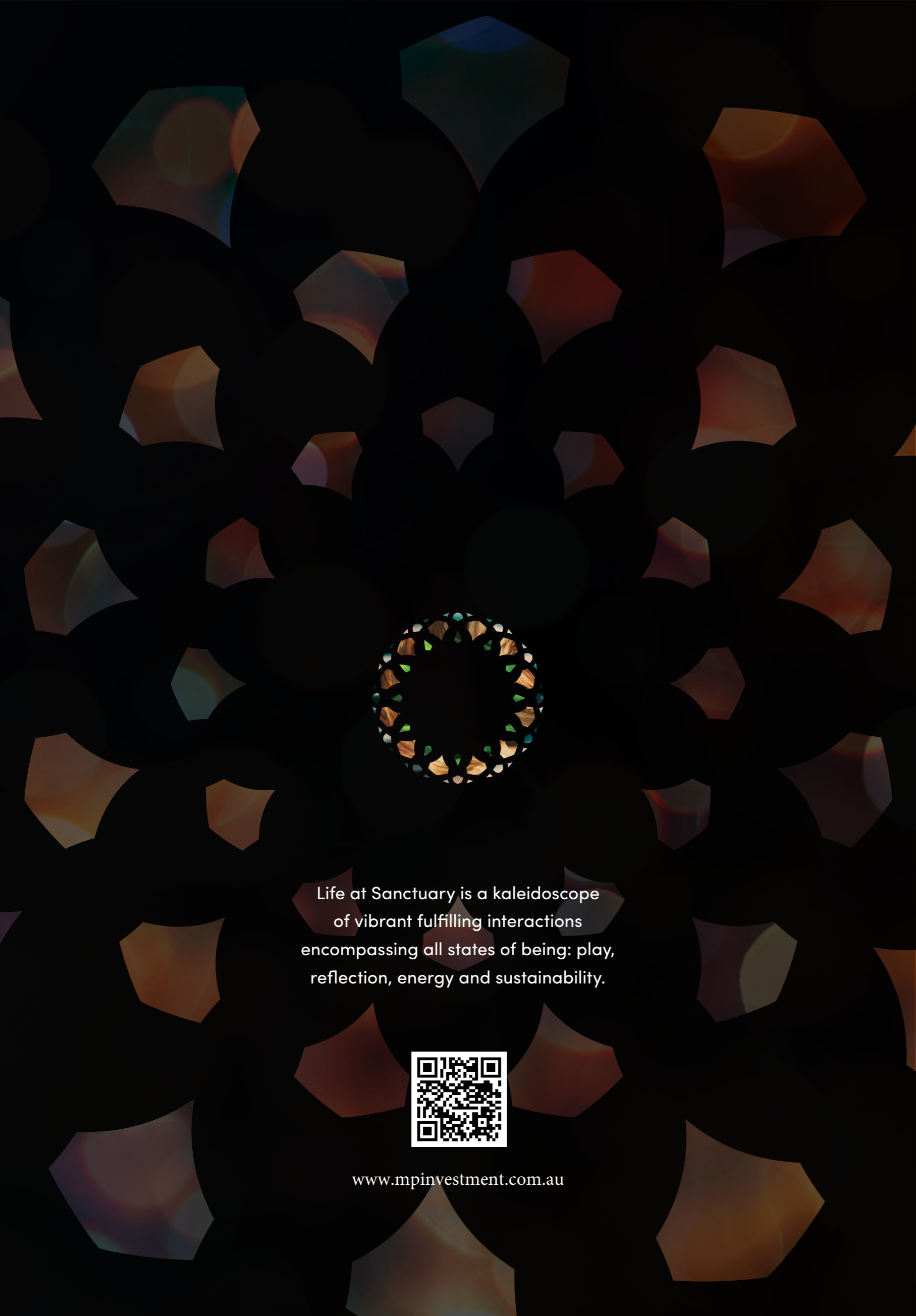
Living, Kitchen, Dining and Laundry Floor Tile



Outdoor Balcony Pavers

All specifications and features are subject to change and all the images are indicatives only.





Life at Sanctuary is a kaleidoscope of vibrant fulfilling interactions encompassing all states of being: play, reflection, energy and sustainability.



[www.mpinvestment.com.au](http://www.mpinvestment.com.au)



Established in 1960, Sekisui House is proud to be one of Japan's most respected community developers and home builders. With over two million homes built, an array of awards for innovation, quality and sustainability, and a focus on improving our environment, we are committed to making a positive impact in the Australian market.

At Sekisui House, we believe that thoughtful housing design can improve quality of life and wellbeing. We look beyond the structure and raw materials to the most important feature of any home - the people who live in it.

How the people in our homes interact with each other, their environment and those around them is at the heart of our philosophy.

We listen to our customers and learn from every home we build, we create homes and communities that improve with time and last for generations. Insights like this give us a unique edge when pioneering new innovations designed to meet the evolving needs of people, communities and the environment.



### Urban Taskforce – Development Excellence Awards 2021

As the first stage of Sanctuary's masterplan, Landing's complete synergy between the architecture and its natural surroundings establishes the serene standard of living that Sanctuary offers. The success of Landing as Stage 1 of Sanctuary was recognised at the 2021 Urban Taskforce awards with our design winning a Development Excellence Award in the 'High-rise Development Metro' category. Reflecting Sanctuary's intentions to nurture healthy and meaningful interactions between its community and the environment, this award is a testament to Landing's excellent design and the improved quality of life it brings to urban communities.

DISCLAIMER: The particulars are set out as a general outline for the guidance of intending purchasers and do not constitute an offer or contract. All descriptions, dimensions, computer generated and real images, references to conditions and necessary permutations for use and other details are given in good faith and are believed to be correct, but any intending purchasers should not rely on them as statements or representations of fact, but must satisfy themselves by inspection or otherwise to the correctness of each item, and where necessary seek advice. No third party supplier or their agents has any authority to make or give any representations or warranty in relation to this property. This brochure is not intended to create any legal obligations or undertakings by any owner or proponent. Whilst care has been taken to ensure that information contained in this publication is accurate as at the time of printing, changes in circumstances after the date of publication may impact on the accuracy of this information. Sekisui House Australia Holdings Pty Limited, Sekisui House Australia Pty Limited, SH Hill Road Development Pty Limited, its officers, employees and agents ("Sekisui House") give no warranty, and make no representation as to the accuracy of any information contained in this publication, or that it is suitable for your intended use. Readers should satisfy themselves as to the accuracy, reliability and correctness of published information and should not rely on any of the published information as a statement or representation of fact or as to any future matter. Except for rights and remedies provided by statute, which cannot be excluded, no liability (under statute, in contract or tort for negligence or otherwise) is assumed by Sekisui House for the information contained in this publication. Designed by TOAST CREATIVE.





# SANCTUARY

WENTWORTH POINT



SEKISUI HOUSE