

The one  
that tells our story.

About us.

SHAWOOD

Whether it's searching for your perfect home,

or looking for love, you always know when you've found

the one.



When you find the one, you know the search is over, and it's the time to relax and enjoy those special moments. It's a feeling of clarity, of confidence and relief. SHAWOOD homes are designed with this in mind.

Our homes aspire to be the one that ticks all the boxes. The one that gives you that feeling. The one you can't get out of your mind.

The one for life.

For over 60 years, Sekisui House has been considered one of the world's most respected home builders and diversified developers.

Building on its commitment to creating homes and communities that improve with time and last for generations, Sekisui House established SHAWOOD in 1995.

SHAWOOD was developed in response to the demand for highly engineered homes that could deliver a new level of comfort and liveability.







The one that pairs human-centric design and ingenious engineering, SHAWOOD is the home you've been searching for.

These are places designed to enhance the everyday – drawing on organic design principles and pre-engineered precision to offer the ultimate in liveability.

SHAWOOD homes are underpinned by three key values:

---

A humanistic approach.

SHAWOOD's design philosophy places people firmly at its heart. Every step, daily task and interaction that makes up the Australian lifestyle, forms the blueprint for our homes.

---

An engineered solution.

Engineered with the utmost precision, every SHAWOOD home incorporates a proprietary construction system that delivers enduring quality and reliability, ensuring longevity and optimal performance.

---

A considered commitment.

SHAWOOD homes actively deliver a better outcome for your family and the environment through sustainable systems and design features that support a happy, healthy lifestyle.

A humanistic approach.

The one

that feels like home.





Above: Considered floorplans seamlessly blend indoor and outdoor environments.

A human-centric approach to design means our homes feel like they are crafted for you, because they are. From the use of tactile natural materials, to how each floorplan flows for function and aesthetics – the human imprint that has shaped SHAWOOD is what makes our homes feel just right.





SHAWOOD's unique designs are focused on enriching the lives of the people that call them home.



### Flowing floorplans.

Designed to flow with the everyday, and be adaptable to the unexpected. Typical household trips – garage to the kitchen with groceries, laundry to the washing line, kitchen to the dining area – happen seamlessly through intelligent room placement.



### Natural materials.

Tactile to the touch and warm and welcoming to the eye, natural materials throughout a SHAWOOD home invites interaction and appeals to the senses. Contemporary styled external screens create opportunity for shadows to play, changing the environment throughout the day while signature exposed beams draw the eye up to light-filled voids and architecturally designed feature ceilings.



## Inside out.

With research showing a close relationship with how nature benefits our wellbeing – and knowing Australians' love of outdoor entertaining – every home has been designed to transition seamlessly between indoor and outdoor environments. Aided by the wide spans achieved by SHAWOOD's structural framing system, living spaces are maximised, with floorplans extending into the sunshine with the simple slide of a door.



## Japanese design principles.

True of its origins, SHAWOOD homes are shaped by Japanese design principles that have evolved over centuries, but have been refined to suit the modern Australian lifestyle. A considered aesthetic celebrates simplicity, natural materials and quality craftsmanship, delivering a functional home that is also beautiful.

“As soon as we walked in, it took our breath away and we just said ‘this is where we need to be’.”

— Steve and Nymol  
Gledswood Hills, NSW Australia





An engineered solution.

The one

that's built to last.



Image: Low maintenance – A nano-hydrophylic coating on the main facade means dust and grime simply washes away.





Engineered for life is a phrase that summarises our approach to home building. Industry-leading innovation and ingenuity is applied to ensure every home is ready to respond and perform at its best. With only the finest natural materials and pre-engineered technologies, SHAWOOD is crafted for the long-term and built to last.

Top Right: External walls are intuitively designed and constructed for thermal balancing and moisture control.

Right: All structural timbers within a SHAWOOD home are inherently strong, capable of spanning wide spaces to deliver beautiful architectural feature ceilings and functional floorplans.





A combination of cutting edge technology and time-honoured tradition. SHAWOOD homes are ingenious in how they deliver enduring value and integrity.



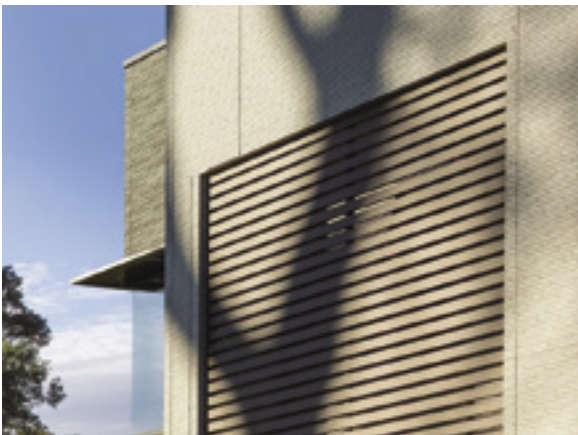
## Structural sophistication.

SHAWOOD homes employ a sophisticated structural framework that fuses time-honoured tradition with technological innovation. A centuries-old post and beam construction method is combined with a proprietary metal joint system, delivering superior strength, assembling accuracy and complete structural integrity. The use of these structural components ensures that a SHAWOOD home is strong to the core.



## Quality assurance and precision.

All structural framing is pre-engineered by computer-controlled machinery in SHAWOOD's own Manufacturing and Quality Control Facility in Australia. With a production tolerance of only 0.5mm to 3mm on site, this precision is reflected in the exquisite detailing that is present in every home, delivering distinct architectural characteristics such as square set cornices, expansive voids and raked ceilings.



## Advanced exteriors.

Day-to-day, the main exterior of a SHAWOOD home sheds dust and grime through a special nano-hydrophilic coating. And in extreme situations, this same high-performance exterior is fire resistant up to 840 degrees. The special nano-hydrophilic coating provides an extremely low maintenance solution – a light shower is capable of cleaning the house of built-up dirt and pollution.



## Hard-working wall system.

SHAWOOD's advanced cavity wall system allows the home to breathe, promoting airflow and managing moisture levels via the natural release of condensation. This increased airflow delivers natural cooling during the summer months and maintains stable comfort all year round.

A considered commitment.

The one

that lets you breathe easy.







SHAWOOD introduces an industry leading and outcome driven approach to sustainability, which was pioneered by its founding company Sekisui House. It's an approach that is holistic and delivers environmental, social and economic benefits – so you know you're making the right choice.





Above: Indoor spaces flow to outdoor zones, offering opportunities to naturally ventilate the home.

Left: Strategic positioning of the homes ensures there is space for gardens to grow and flourish.

The sustainable practices infused into SHAWOOD show that things that are good for the planet, are also good for people's health, happiness and wellbeing.



## Passive heating, cooling & lighting.

A SHAWOOD home inherently reduces the reliance on air-conditioning and artificial lighting through a focus on sustainable methods of temperature control and an intake of natural light. In summer, strategically placed operable windows and louvres naturally cool the home via increased airflow and gentle cross-ventilation. Come winter, north facing glazed areas make the most of winter sunlight, while high performance glazing reduces heat gain in summer. Clever, and cool when you need it to be.



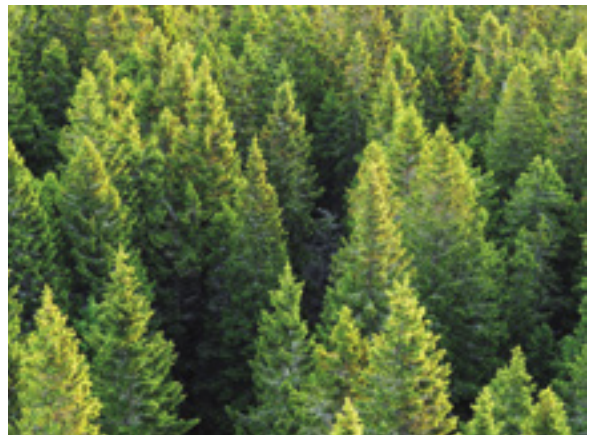
## Let there be light.

The effect of natural light on our health and happiness has been scientifically proven, hence why every SHAWOOD home has been designed to maximise natural light. The uninterrupted spans afforded by SHAWOOD's unique timber post and beam structure are capable of creating double-height voids and generous spaces to optimise views and welcome in natural light.



## Breathe easy.

Only paints that are low in volatile organic compounds (low VOC) are used within SHAWOOD homes. This minimises the release of toxins into the internal atmosphere and provides better interior air quality for you and your loved ones.



## Sustainable sourcing.

All structural timbers used are eco-certified and sourced from sustainably managed forests in Northern Europe, delivering select timbers with superior quality, uniformity, and load bearing performance.



## SEKISUI HOUSE

For over 60 years, Sekisui House has been considered one of the world's largest and most respected home building companies. The company has delivered around 2.5 million homes worldwide, each crafted with people at its heart, with respect for the environment and to the highest material standard. The trust and respect Sekisui House has earned is felt by communities across the globe, including Singapore, the USA, Australia, China and the UK. The company's human-centric philosophy guides its work at every level, from masterplanning and community design, through to the finish of a home that will shelter a family for generations.

Agency at work;-  
[www.mpinvestment.com.au](http://www.mpinvestment.com.au)

