



SANCTUARY  
WENTWORTH POINT



WILLOW



SEKISUI HOUSE

IMMERSE YOURSELF  
IN NATURE



---

## WILLOW

---

### Unique and unrivalled access to nature.

With unobstructed views nestled in a water and parkland setting, Willow is a refuge, the green heart of Sanctuary.

Across three stately new buildings, this third stage introduces 323 beautifully designed apartments. Offering one, two and three bedroom floor plans, two available colour schemes and customisable layouts, residents can select a home that meets their specific needs.

Its holistic design delivers a private lagoon pool, delightfully curated podium gardens and everyday access to natural landscapes through an exclusive outlook to the foreshore parklands and the river beyond. Softened edges that blur the line between the natural and built form introduce an ensemble defined by its gentle landscaping.

Willow is a place where we effortlessly immerse ourselves in nature.



Willow buildings are imbued with a familial architectural language influenced by the subtle beauty of its natural surroundings. The curvature of the Parramatta River, depth of colour in the neighbouring parklands, and softness of the native flora; Willow draws nature into the heart of the scheme and beautifully communicates a life that is one with, and immersed in nature.



---

## IMMERSE YOURSELF IN NATURE

---

Willow is a centre of life for people and an expression of Sanctuary's quest to harmoniously reconcile humanity with nature and the built form.

Overlooking the meandering Parramatta River and achieving the highest of international living standards, Willow has been designed to allow seamless communication between the natural landscape and modern architecture - putting family, community, and the environment at the heart of its experience.

Indulge in the ease of connection between Wentworth Point and Sydney's key city destinations, such as Barangaroo and

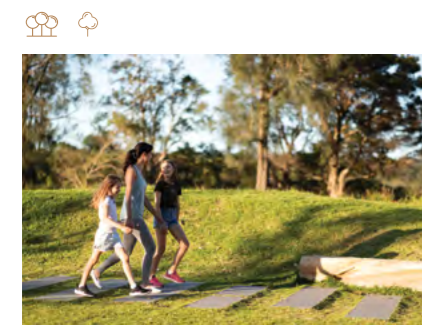
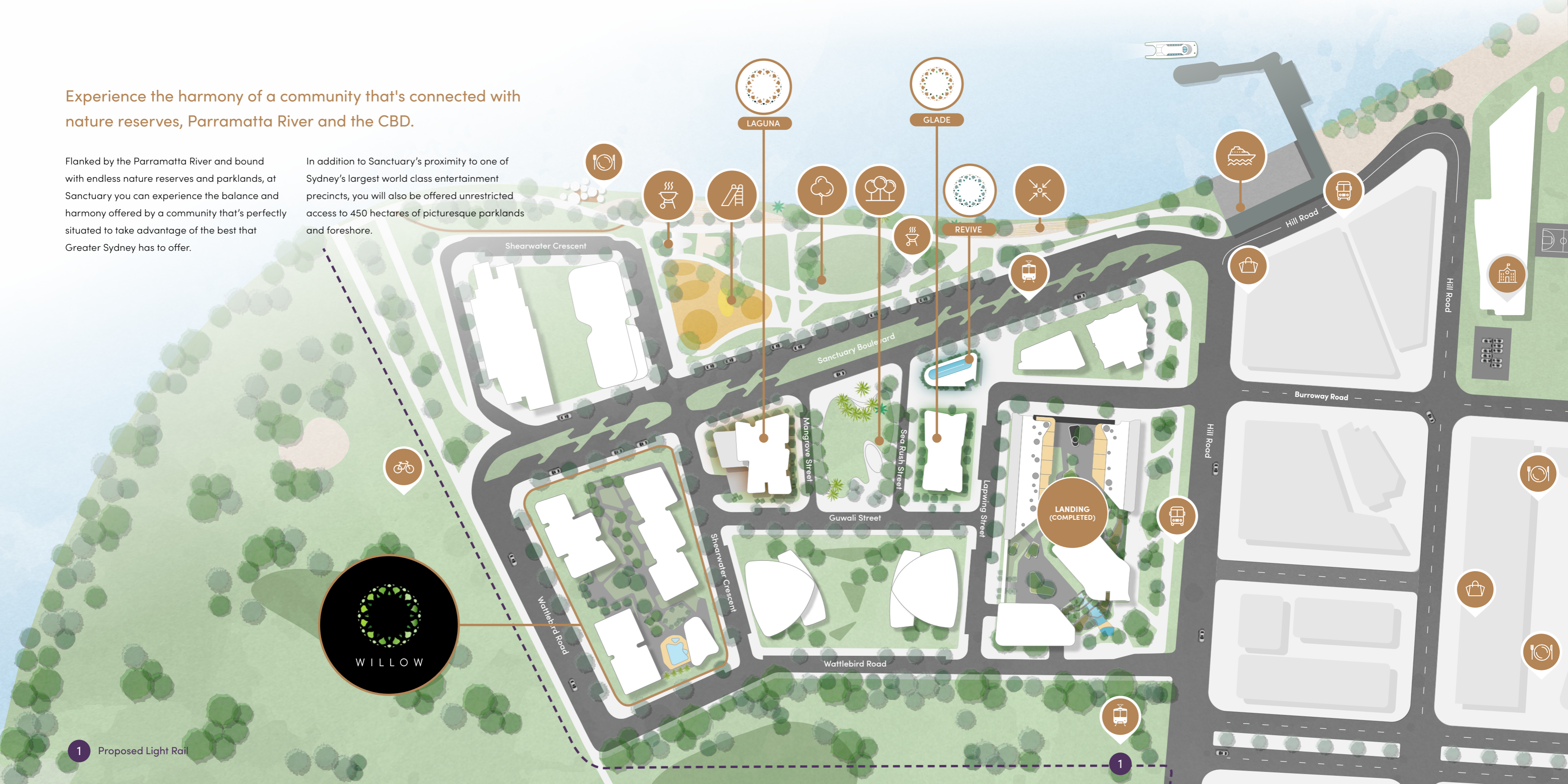
Circular Quay, a simple ferry ride away. Enjoy the walkable freedom of Sanctuary's exclusive resort-style amenities and abundant community activity at your doorstep.

Whether exploring the neighbouring nature reserves, recharging in Revive's fitness centre or sunbathing atop the Stage 3 exclusive lagoon pool, Willow encourages the opportunity to savour the everyday.

Experience the harmony of a community that's connected with nature reserves, Parramatta River and the CBD.

Flanked by the Parramatta River and bound with endless nature reserves and parklands, at Sanctuary you can experience the balance and harmony offered by a community that's perfectly situated to take advantage of the best that Greater Sydney has to offer.

In addition to Sanctuary's proximity to one of Sydney's largest world class entertainment precincts, you will also be offered unrestricted access to 450 hectares of picturesque parklands and foreshore.



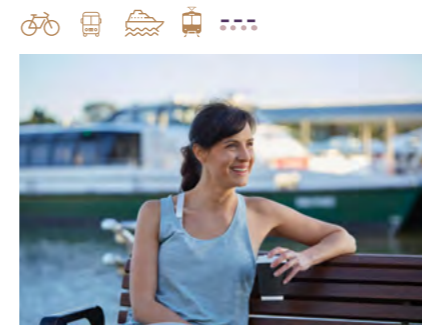
Neighbourhood Green & Parks

Sanctuary enjoys access to local parklands, including the expansive, lush and vibrant Foreshore Park and Neighbourhood Green.



Revive

Revive Health Club features state-of-the-art facilities which allows residents to enjoy a healthy lifestyle that promotes balance and wellbeing.



Connectivity

Sanctuary benefits from ferry and bus services, along with the proposed Parramatta Light Rail. This two-way service links Wentworth Point with Parramatta CBD, Camellia Town Centre, the Carter Street Precinct and Sydney Olympic Park.



Education & Entertainment

Residents can enjoy the convenience of Wentworth Point with leading schools and entertainment facilities at their doorstep surrounded by the nature reserves of Sanctuary.



Shopping & Dining

Pierside Shopping Centre and Marina Square, a new retail precinct, are both within close proximity, allowing for shopping, dining and browsing.



Explore

There are 47.77 hectares of nature reserves for you to explore connecting you to neighbouring suburbs Sydney Olympic Park and Newington.



## LIGHT SCHEME

### Light Edges

This fresh palette of seed green and tonal grey gently reflects Sanctuary's parklands and melts into the expansive riverscape view beyond.

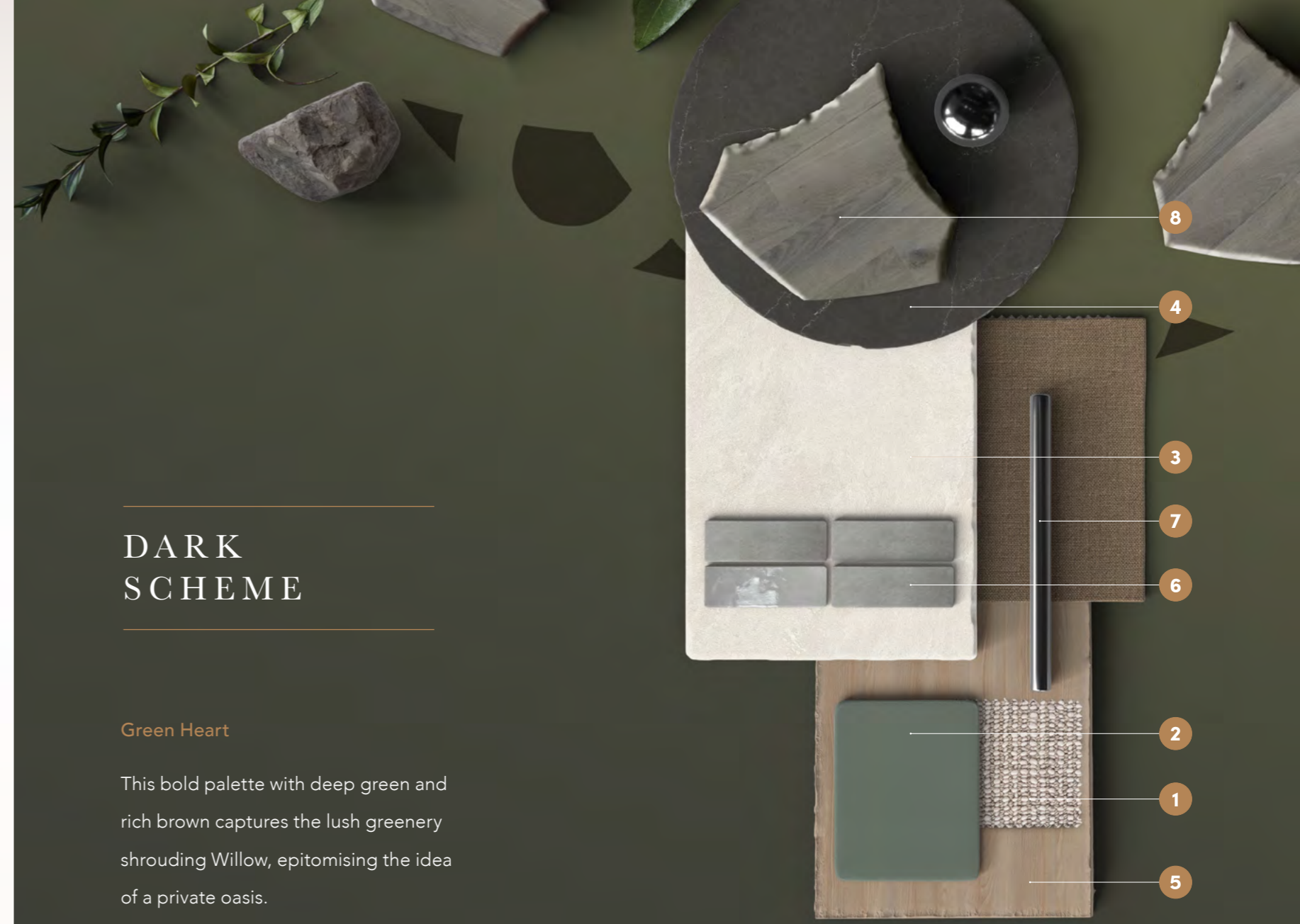
1. 100% Wool Bedroom Carpet
2. Laminate Kitchen Joinery
3. Kitchen, Bathroom and Laundry Porcelain Floor Tile
4. Kitchen and Bathroom Reconstituted Stone Benchtop
5. Kitchen, Bathroom and Laundry Timber Laminate Joinery
6. Bathroom Decorative Wall Tile
7. Brushed Gunmetal Fixtures
8. Living and Dining Hybrid Floorboards



Artist's Impression  
'Light Edges' Standard Kitchen



Artist's Impression  
'Light Edges' Standard Bathroom



## DARK SCHEME

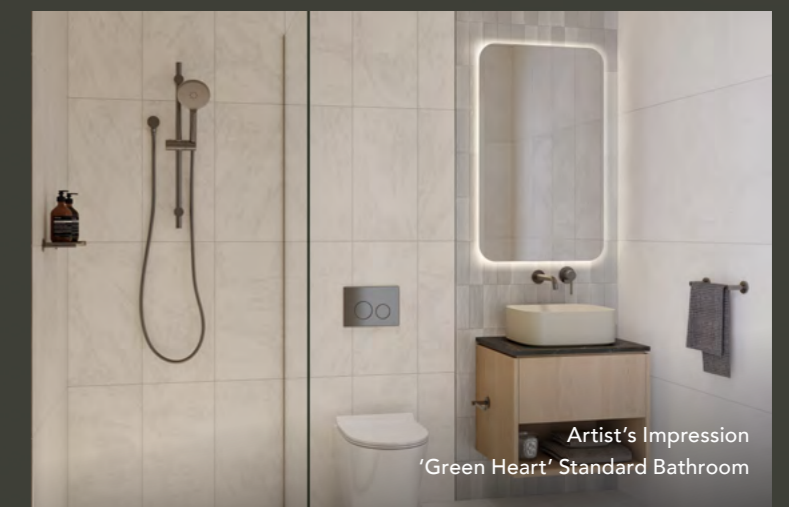
### Green Heart

This bold palette with deep green and rich brown captures the lush greenery shrouding Willow, epitomising the idea of a private oasis.

1. 100% Wool Bedroom Carpet
2. Laminate Kitchen Joinery
3. Kitchen, Bathroom and Laundry Porcelain Floor Tile
4. Kitchen and Bathroom Reconstituted Stone Benchtop
5. Kitchen, Bathroom and Laundry Timber Laminate Joinery
6. Bathroom Decorative Wall Tile
7. Brushed Gunmetal Fixtures
8. Living and Dining Hybrid Floorboards



Artist's Impression  
'Green Heart' Standard Kitchen



Artist's Impression  
'Green Heart' Standard Bathroom

## WILLOW AMENITIES

Exclusive to Willow is a lavish outdoor podium boasting a lagoon pool, recreation space and private cabanas overlooking the Newington Nature Reserve and river's edge.

Willow is home to:

- An exclusive outdoor lagoon pool
- Landscaped podium gardens
- Cabanas and rest areas
- Alfresco BBQ areas
- Car wash bay
- Electric vehicle charging stations
- Lush green spaces & water features
- Multiple relaxation zones
- Adaptable multi-purpose room
- Green community spaces



## REVIVE

Enjoy a healthy lifestyle that promotes balance and wellbeing.

Neighbouring Willow, the Revive Health Club is an exclusive multi-level facilities centre designed to bring health & wellness into the lives of current and future Sanctuary residents.

Revive offers a sophisticated indoor/outdoor gym facility with state-of-the-art equipment

showcasing floor-to-ceiling windows overlooking the water's edge.

Join early morning exercise classes or recharge in the heated indoor pool; Revive goes well beyond your typical gymnasium offering.

---

## SEKISUI HOUSE AUSTRALIA

---

### SEKISUI HOUSE

Founded in Japan in 1960, and having built over two million homes, Sekisui House is one of the most innovative home builders and community developers in Australia.

At Sekisui House we believe you shouldn't just hope for a better home, you should expect it.

We practice Smart Universal Design – sustainable, environmentally focused design applicable to

everyone, regardless of their age, ability or stage in life. With every project we consider the ongoing impact on the surrounding community, and pay meticulous attention to existing ecosystems and community infrastructure.

At Sekisui House we create homes and communities that improve with time, and last for generations.

### TURNER

Turner is a Sydney-based architecture firm seeking to challenge assumptions and imagine the unexplored in their creatively crafted environments.

Their projects range from urban design and master planning through to social and affordable housing and student accommodation.

Interior architecture and environmental graphics are commonly incorporated as part of their service, as well as delivered separately for stand-alone projects. Their projects reflect the diversity of living situations while being underpinned by a familial approach to knit together our refined urban fabric.

DISCLAIMER: The particulars are set out as a general outline for the guidance of intending purchasers and do not constitute an offer or contract. All descriptions, dimensions, computer generated and real images, references to conditions and necessary permutations for use and other details are given in good faith and are believed to be correct, but any intending purchasers should not rely on them as statements or representations of fact, but must satisfy themselves by inspection or otherwise to the correctness of each item, and where necessary seek advice. No third party supplier or their agents has any authority to make or give any representations or warranty in relation to this property. This brochure is not intended to create any legal obligations or undertakings by any owner or proponent. Whilst care has been taken to ensure that information contained in this publication is accurate as at the time of printing, changes in circumstances after the date of publication may impact on the accuracy of this information. Sekisui House Australia Holdings Pty Limited, Sekisui House Australia Pty Limited, SH Hill Road Development Pty Limited, its officers, employees and agents ("Sekisui House") give no warranty, and make no representation as to the accuracy of any information contained in this publication, or that it is suitable for your intended use. Readers should satisfy themselves as to the accuracy, reliability and correctness of published information and should not rely on any of the published information as a statement or representation of fact or as to any future matter. Except for rights and remedies provided by statute, which cannot be excluded, no liability (under statute, in contract or tort for negligence or otherwise) is assumed by Sekisui House for the information contained in this publication.



IMMERSE YOURSELF  
IN NATURE



SANCTUARY'S MOST SECLUDED RELEASE

STAGE THREE WILLOW



[www.mpinvestment.com.au](http://www.mpinvestment.com.au)